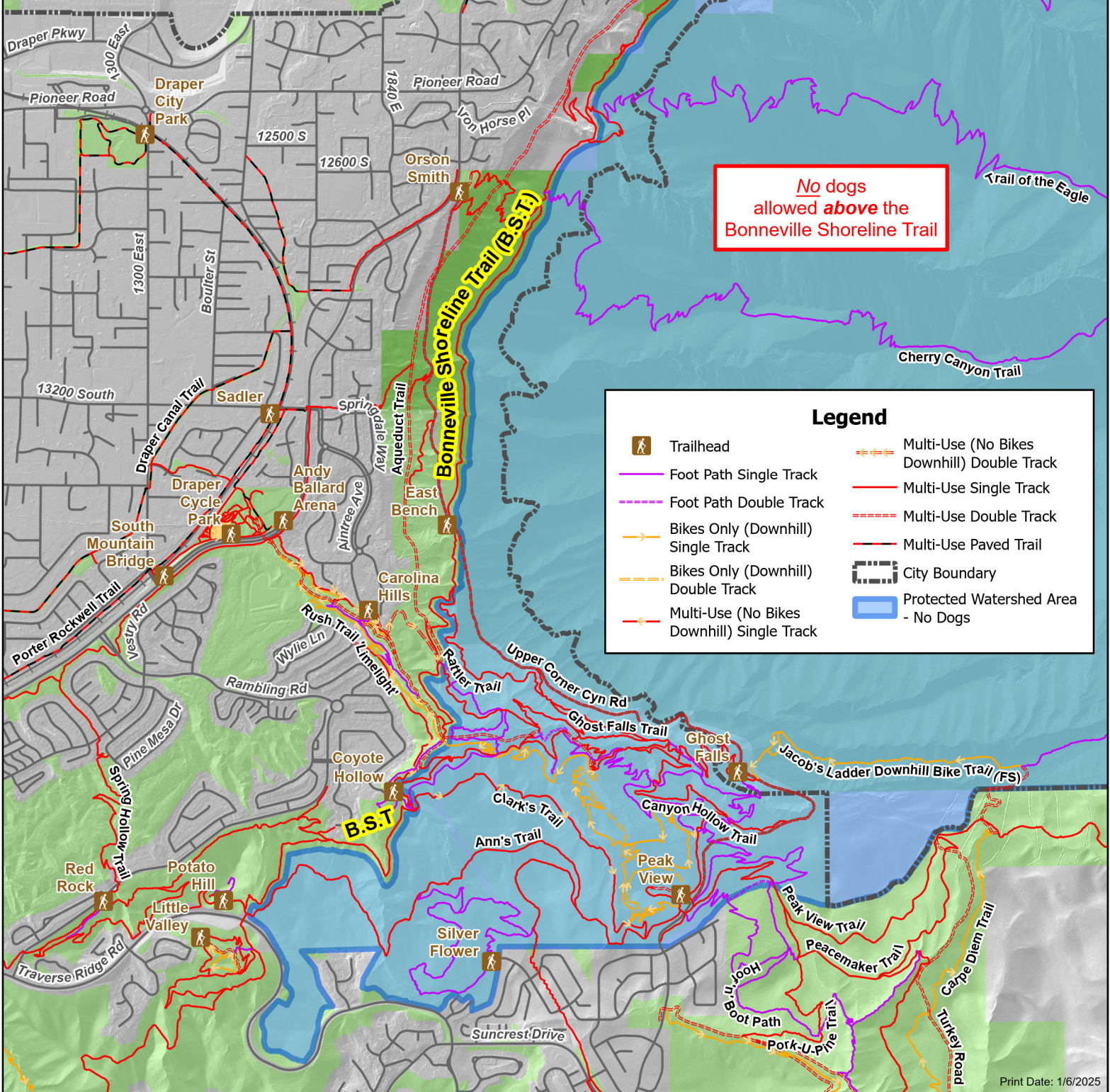
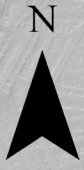




# Draper Protected Watershed Area

Dogs, on leash only, allowed on and below the Bonneville Shoreline Trail

No dogs allowed above the Bonneville Shoreline Trail



**Legend**

	Trailhead		Multi-Use (No Bikes Downhill) Double Track
	Foot Path Single Track		Multi-Use Single Track
	Foot Path Double Track		Multi-Use Double Track
	Bikes Only (Downhill) Single Track		Multi-Use Paved Trail
	Bikes Only (Downhill) Double Track		City Boundary
	Multi-Use (No Bikes Downhill) Single Track		Protected Watershed Area - No Dogs