

# State of Utah

---

## Community Wildfire Preparedness Plan

For the Wildland Urban Interface (WUI)



2021

---



Department of Natural Resources  
Division of Forestry, Fire and State Lands  
1594 W North Temple, PO Box 145703, Salt Lake City, UT 84114-5703

## **Declaration and Concurrence Page**

Adopting this CWPP doesn't mean you are fully engaged in the CWS process. Other participation and documentation are required for State delegated fire funding. Please consult with Utah State Forestry, Fire & State Lands in your area to ensure the process is complete. This list needs to be customized to the individual plan. Provide the names and affiliations of all cooperators. This page will then be signed after all cooperators have reviewed the plan and concur with its contents.

This document provides the outline for and specifies the information recommended for inclusion in a CWPP. Completed CWPPs should be submitted to the local Area Manager or Fire Management Officer with the Utah Division of Forestry, Fire and State Lands for final concurrence.

# Suncrest & Traverse Mountain CWPP

## CWPP Signature Page

Name

**Clint Smith**

---

Signature

*Clint Smith*

Clint Smith (Feb 4, 2021 18:03 MST)

---

Affiliation

**Draper Fire Chief**

---

Date

**02/04/2021**

---

Name

**Bart Vawdrey**

---

Signature

*Bart Vawdrey*

Bart Vawdrey (Feb 5, 2021 08:11 MST)

---

Affiliation

**Draper Deputy Fire Chief**

---

Date

**02/05/2021**

---

Name

**David Dobbins**

---

Signature

*David Dobbins*

David Dobbins (Feb 5, 2021 09:59 MST)

---

Affiliation

**City Manager**

---

Date

**02/05/2021**

---

Name

**Troy Walker**

---

Signature

*Troy Walker*

Troy Walker (Feb 15, 2021 09:25 MST)

---

Affiliation

**Mayor**

---

Date

**02/15/2021**

---

Name

**Dax Reid**

---

Signature

*Dax Reid*

Dax Reid (Feb 16, 2021 11:58 MST)

---

Affiliation

**WUI Coordinator**

---

Date

**02/16/2021**

---

Name

**Julie Murphy**

---

Signature

*Julie Murphy*

Julie Murphy (Feb 16, 2021 12:02 MST)

---

Affiliation

**Wildfire Risk Reduction Coordinator**

---

Date

**02/16/2021**

---

# Suncrest & Traverse Mountain CWPP

Name

Dax Reid

---

Signature

  
Dax Reid (Feb 16, 2021 14:39 MST)

---

Name

---

Signature

---

Name

---

Signature

---

Name

---

Signature

---

Name

---

Signature

---

Name

---

Signature

---

Affiliation

WUI Coordinator

---

Date

02/16/2021

---

Affiliation

---

Date

---

Affiliation

---

Date

---

Affiliation

---

Date

---

Affiliation

---

Date

---

Affiliation

---

Date

---

# Suncrest & Traverse Mountain CWPP

## INTRODUCTION

Over 600 of Utah's communities have been classified as "at risk" of wildfire. The safety of the citizens of any community and the protection of private property and community infrastructure is a shared responsibility between the citizens; the owner, developer or association; and the local, county, state and federal governments. **The primary responsibility, however, remains with the local government and the citizen/owner.**

### The purpose of wildfire preparedness planning is to...

- Motivate and empower local government, communities, and property owners to organize, plan, and take action on issues impacting the safety and resilience of values at risk
- Enhance levels of fire resilience and protection to the communities and infrastructure
- Identify the threat of wildland fires in the area
- Identify strategies to reduce the risks to structures, infrastructure and commerce in the community during a wildfire
- Identify wildfire hazards, education, and mitigation actions needed to reduce risk
- Transfer practical knowledge through collaboration between stakeholders toward common goals and objectives

### Outcomes of wildfire preparedness planning...

- Facilitate organization of sustainable efforts to guide planning and implementation of actions:  
**1. Fire adapted communities 2. Resilient landscapes 3. Safe and effective fire response**
- Improve community safety through:
  - ✓ Coordination and collaboration
  - ✓ Public awareness and education
  - ✓ Firefighter training
  - ✓ Fuel modification
  - ✓ Improved fire response capabilities
  - ✓ Fire prevention
  - ✓ Development of long-term strategies

## RESOURCES

For resources to complete a wildfire preparedness plan for your community, consider organizations such as the following:

- ✓ Local / Primary fire protection provider
- ✓ Local Resource, Conservation and Development Districts
- ✓ Utah Division of Forestry, Fire and State Lands
- ✓ Utah State Fire Marshal (Dept. of Public Safety)
- ✓ Utah Division of Emergency Management
- ✓ Utah Living With Fire
- ✓ Local fire agencies
- ✓ Local emergency management services
- ✓ USDA Forest Service
- ✓ U.S. Department of Interior Agencies
- ✓ Utah Resource Conservation Districts
- ✓ Utah Soil Conservation Districts

## STATEMENT OF LIABILITY

The activities suggested by this template, associated checklist and guidance document, the assessments and recommendations of fire officials, and the plans and projects outlined by the community wildfire council, are made in good faith according to information available at this time. The Utah Division of Forestry, Fire and State Lands assumes no liability and makes no guarantees regarding the level of success users of this plan will experience. Wildfire still occurs, despite efforts to prevent it or contain it; the intention of all decisions and actions made under this plan is to reduce the potential for, and the consequences of, wildfire.

*Last revised March 2016*

# Suncrest & Traverse Mountain CWPP

## PLANNING OVERVIEW

*Briefly describe the overall planning process that took place to complete this plan. Be sure to include a timeline of the events/meetings, the organizations and partners that participated, a description of why this planning process was initiated, and the overall intended outcome of the process, and how outcomes were accomplished. This is much like the information described above (purpose and outcome) but tailored to your community. If desired, please acknowledge any individuals or organizations that were essential to accomplishing the final plan.*

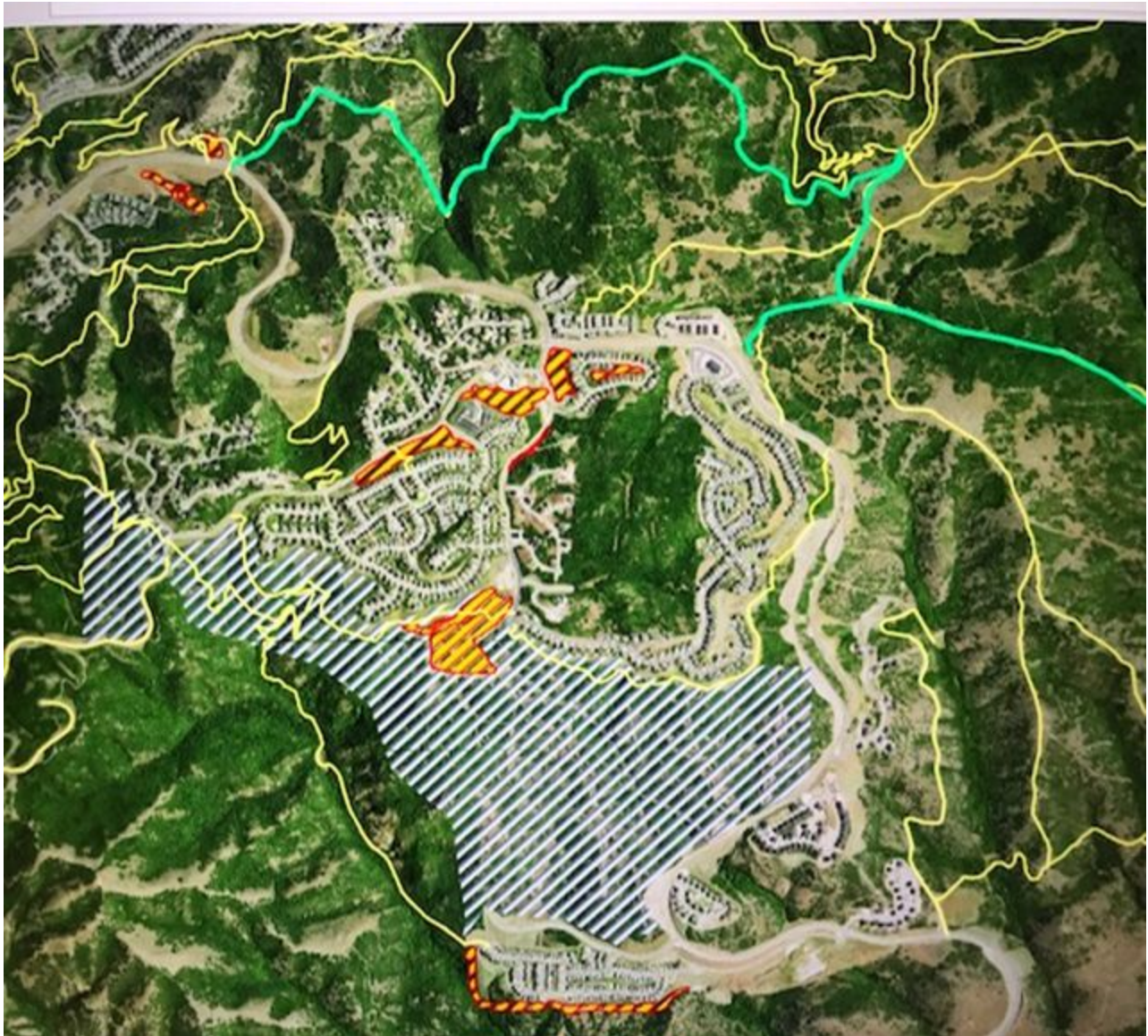
**2014 - 2018** - A risk assessment of Suncrest was completed by Draper City Fire. It focused on identifying areas of concern in the community and to prioritize areas of greatest wildfire threat. The assessment will help with strategic hazard fuel mitigation and is designed to decrease wildfire intensity and duration. Draper City and Suncrest community plan to reduce wildfire risk collaboratively via an integrated approach to include: Pre-fire planning, Public outreach and education to promote and implement a fire adapted community approach, Vegetation management and fuel reduction at the City and community level, Reduction of structural ignitability by promoting and enforcing building codes, ordinances and statutes. This is intended to be a living document updated and maintained by Draper FD, community representatives and FFSL / County Fire Warden.

**1/28/2021** - Dax Reid transposed the 2018 version of the CWPP into a new Google Document format and added a new Declaration and Concurrence Page along with Utah Wildfire Risk Assessment Portal Maps (UWRAP). FFSL is in the process of updating UWRAP and new maps will be added once they are available.

**2/16/2021** - Dax added the signature page to the CWPP and sent a pdf copy to Cody Jolley. The document is good through 2026.

# Suncrest & Traverse Mountain CWPP

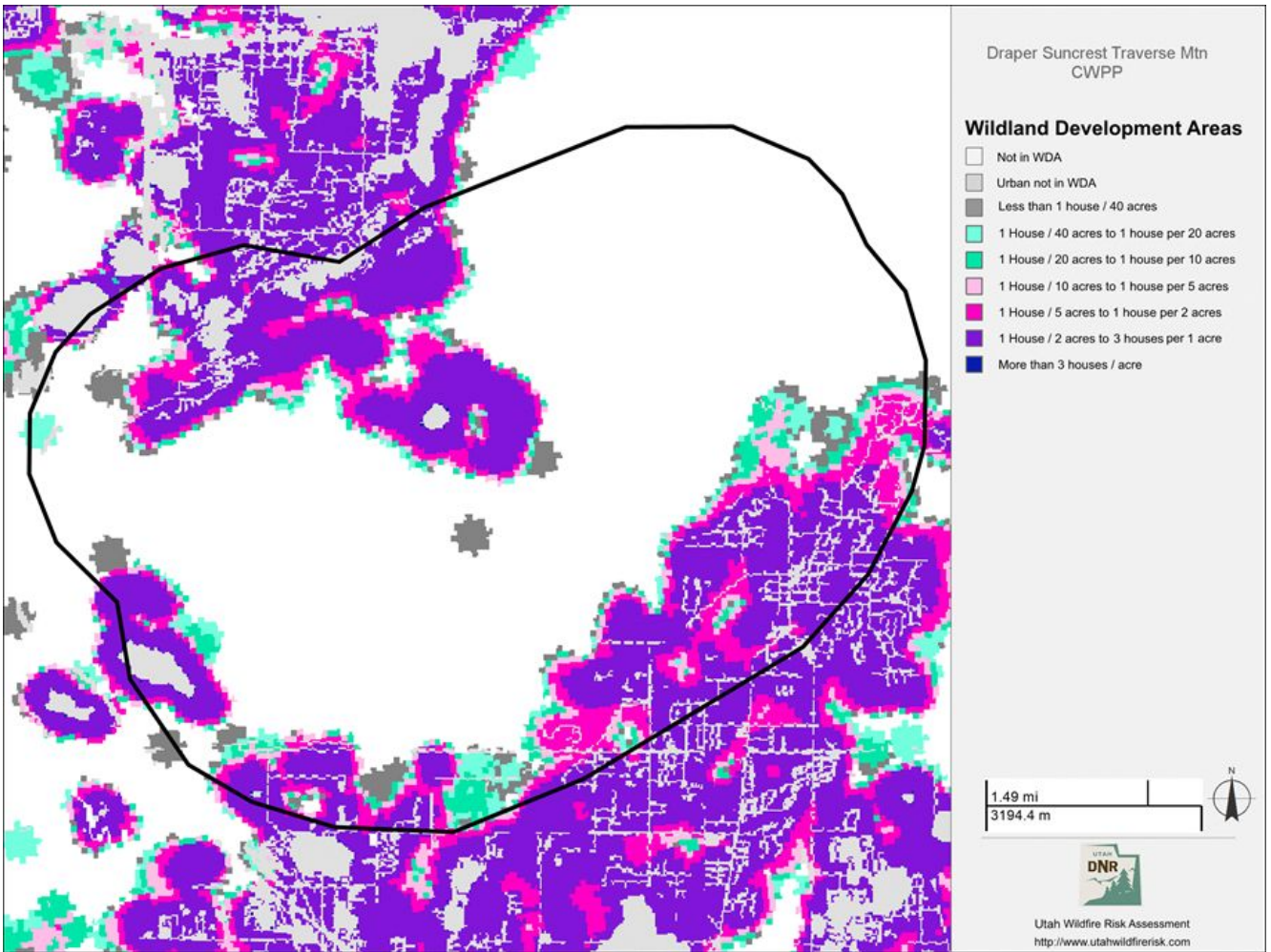
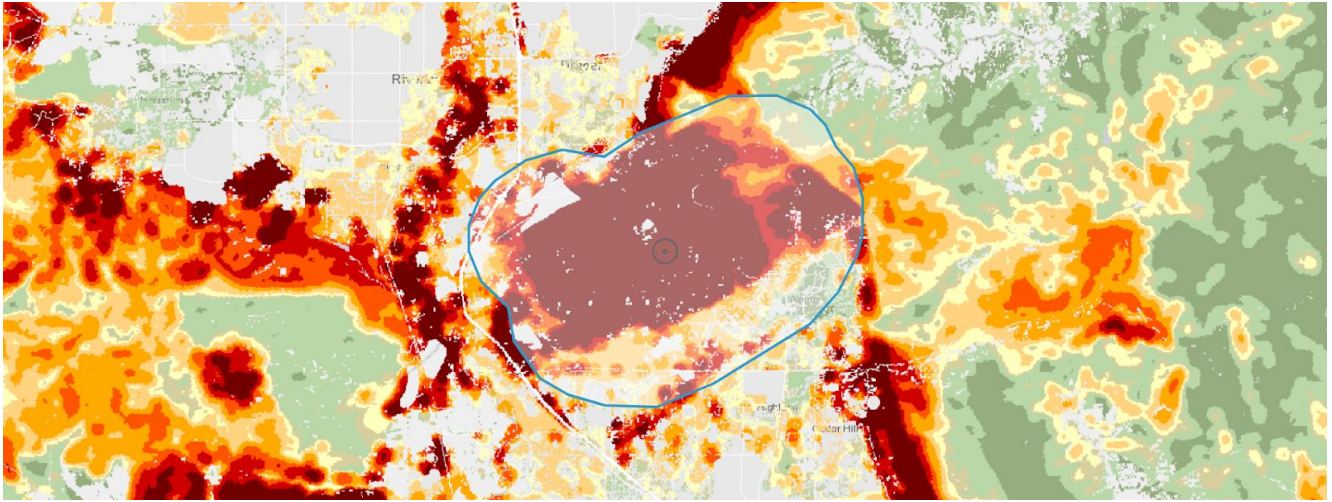
## PLAN OVERVIEW MAP – Area of Interest



**Communities At Risk = 8**

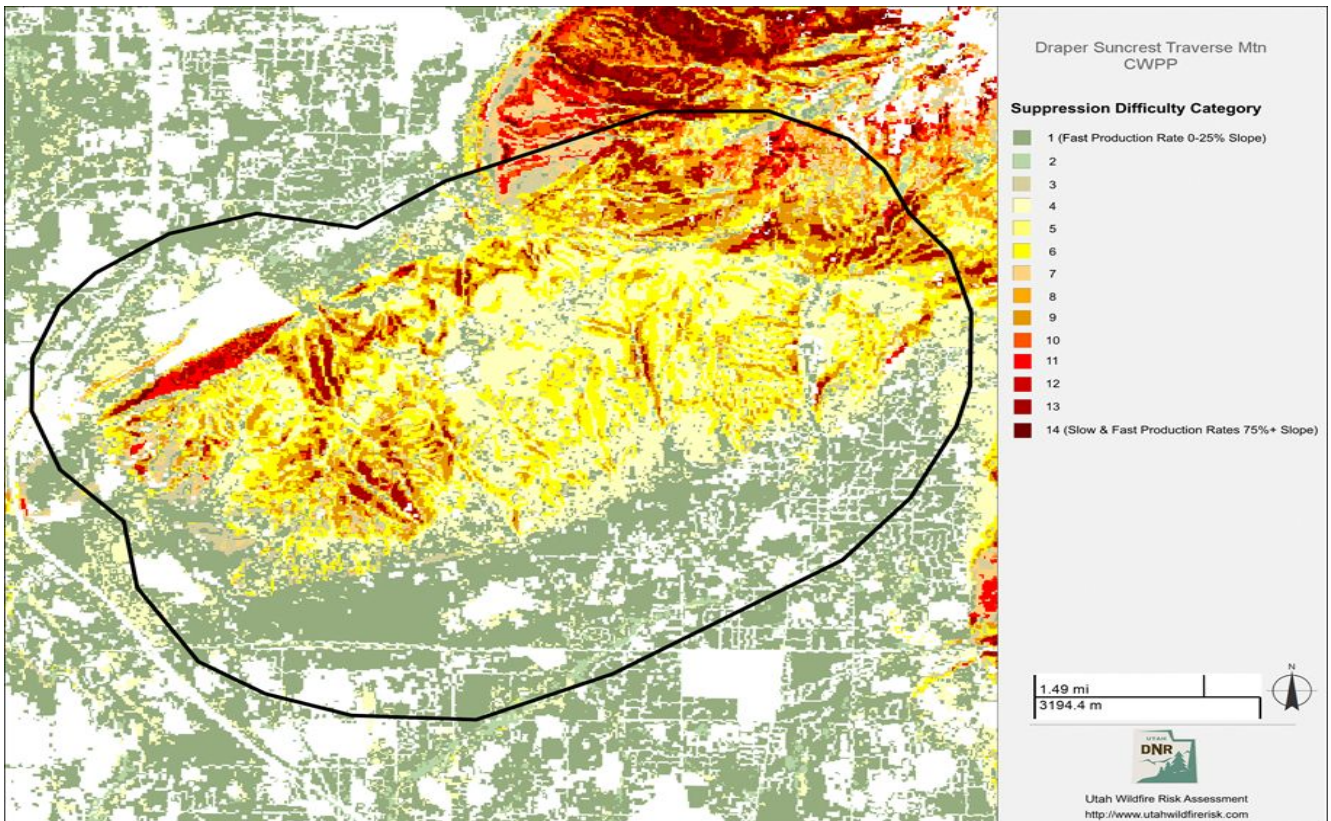
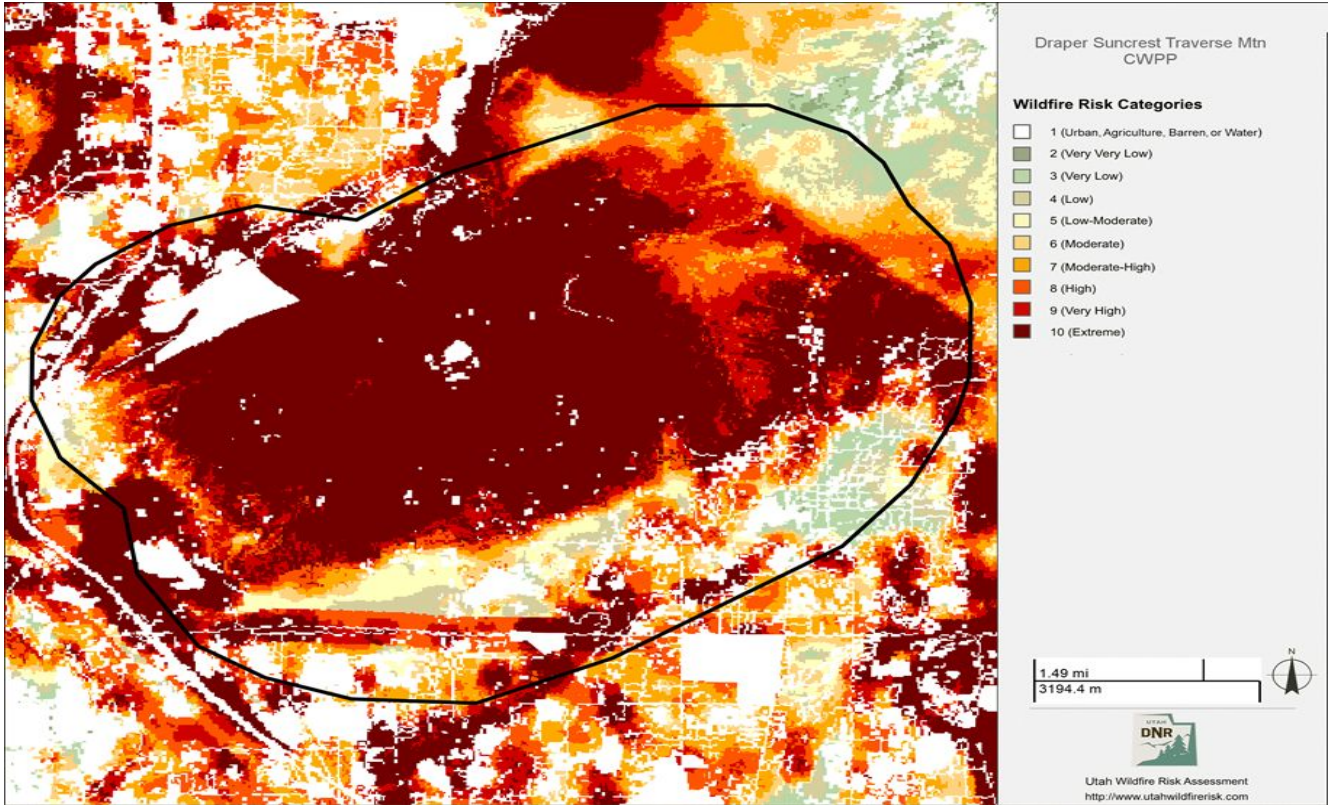
**GPS Coordinates = 40.4909247, -111.8540225**

# Suncrest & Traverse Mountain CWPP

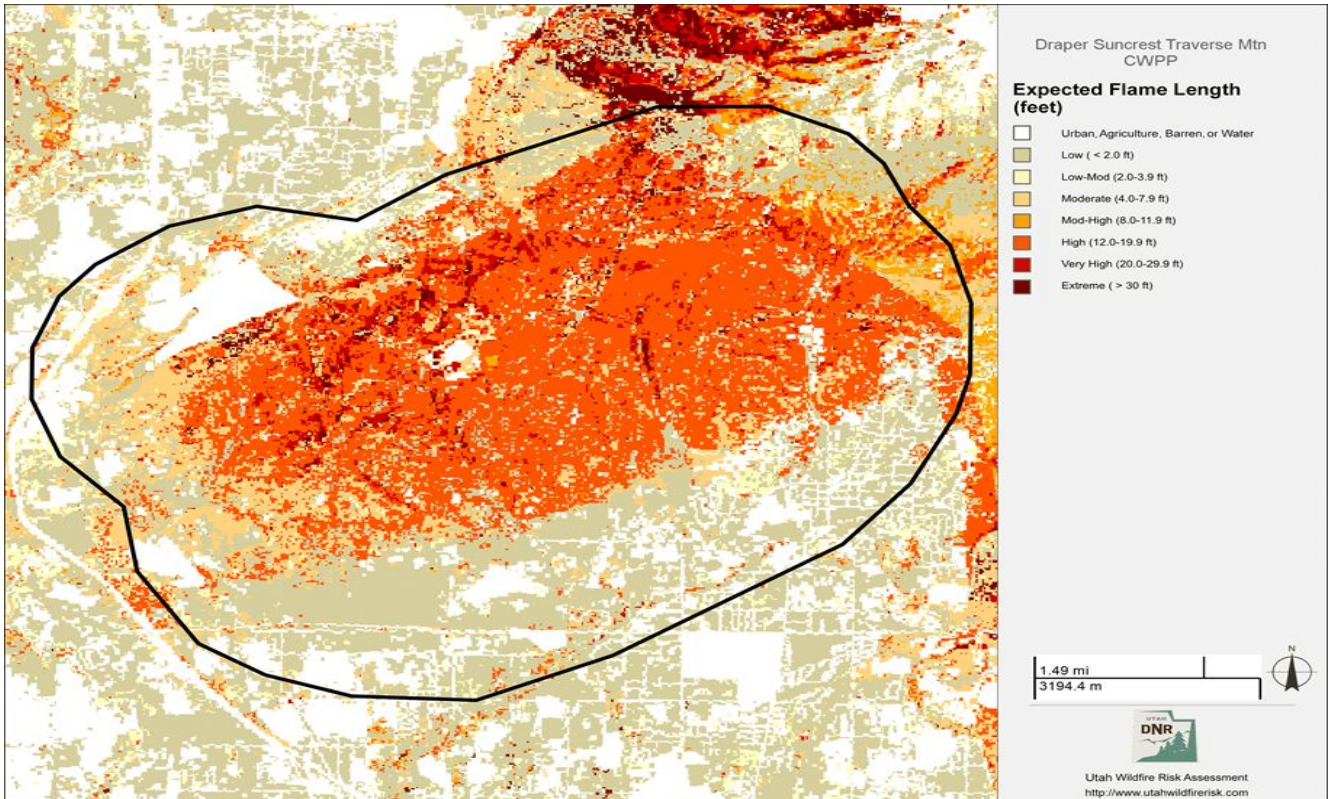
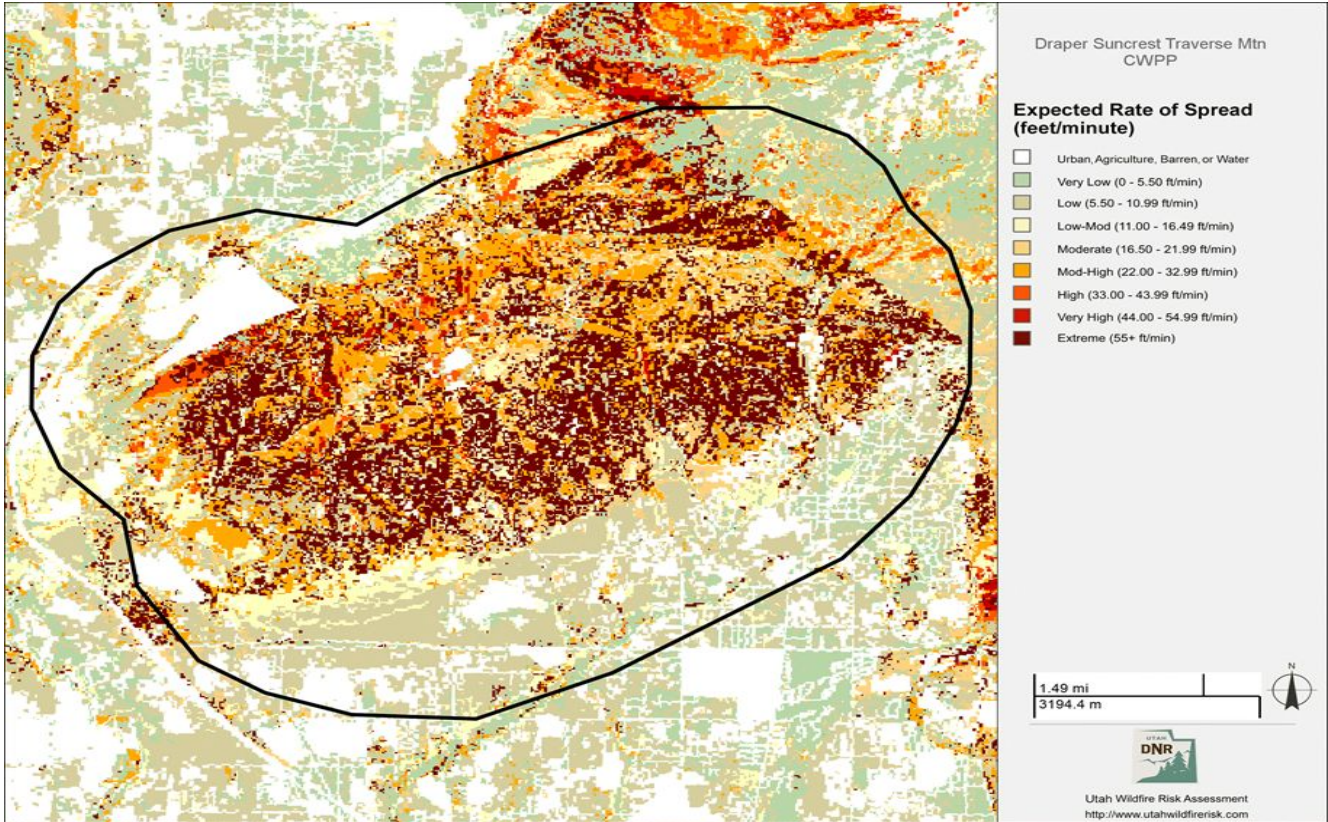




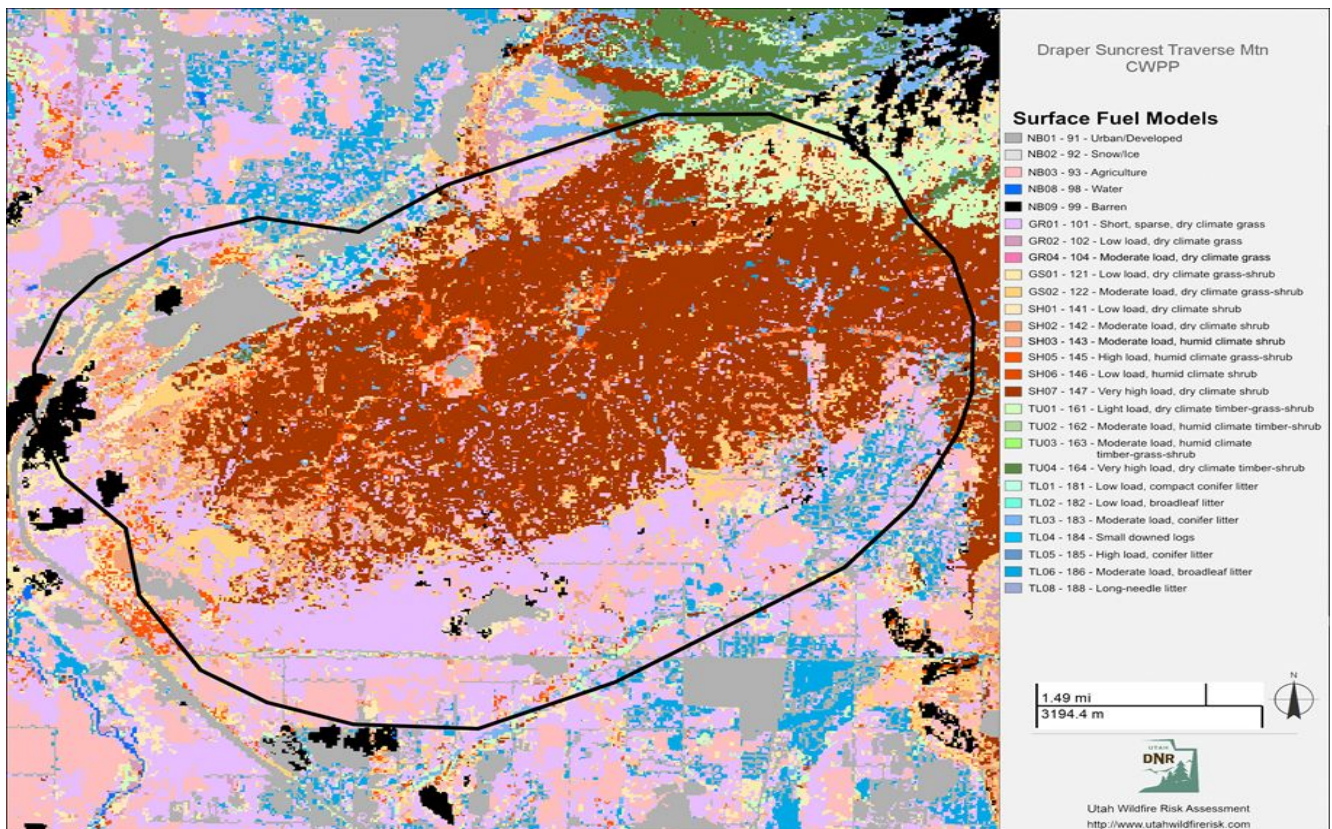
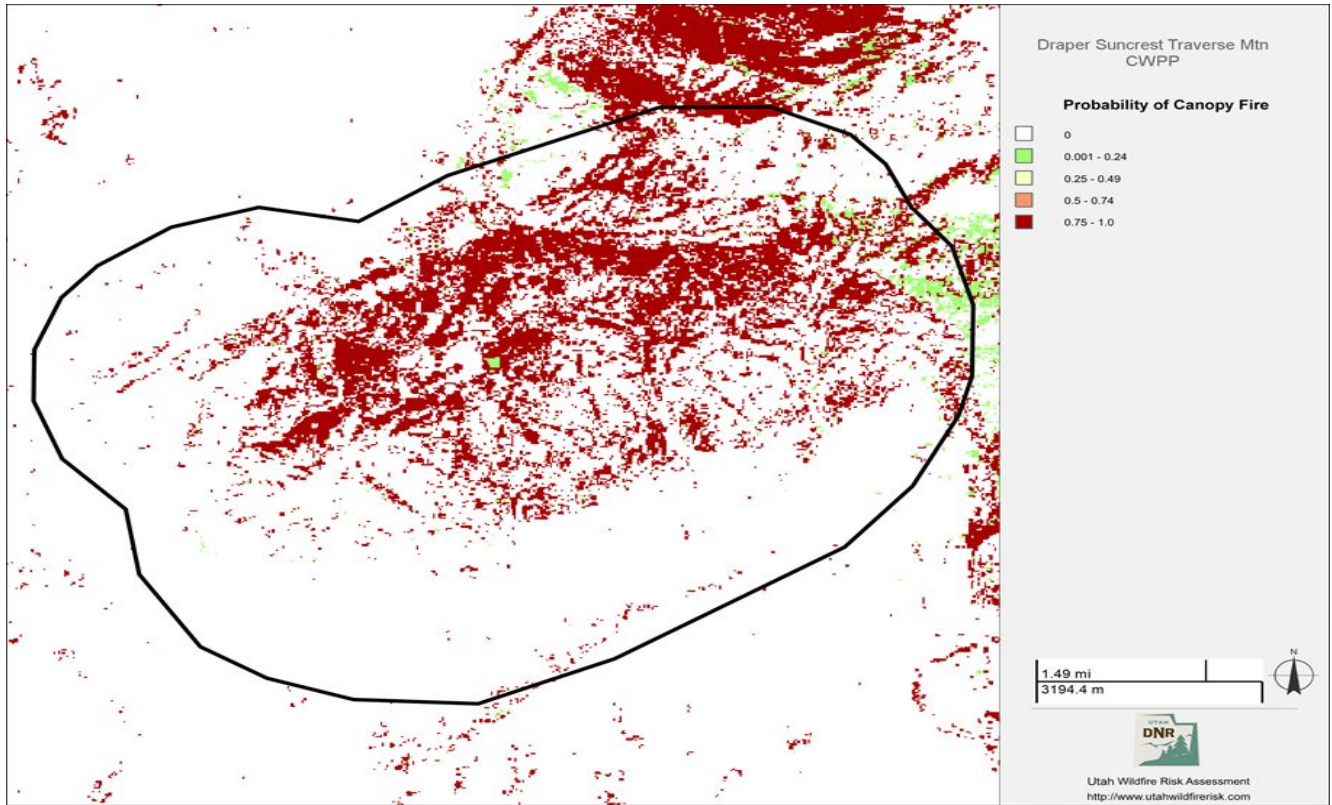
# Suncrest & Traverse Mountain CWPP



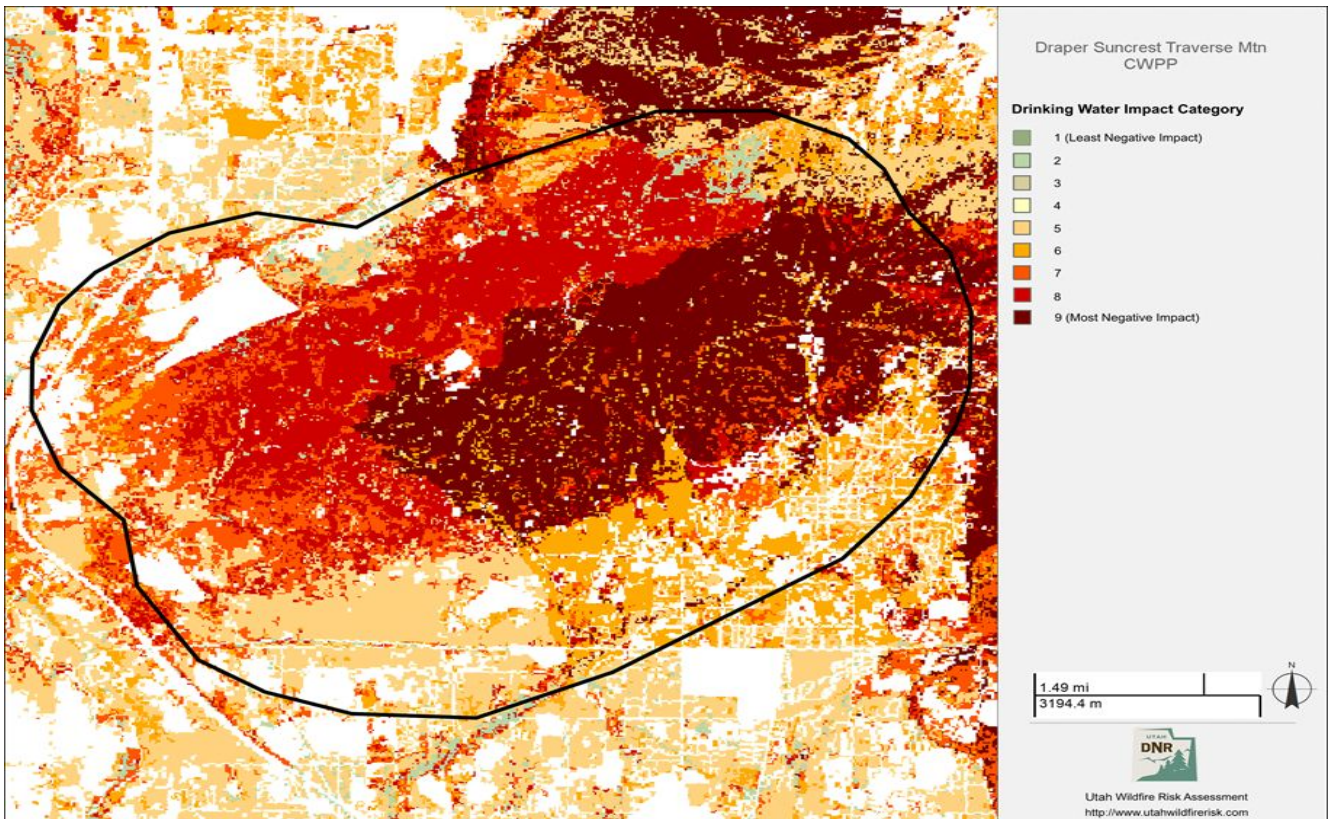
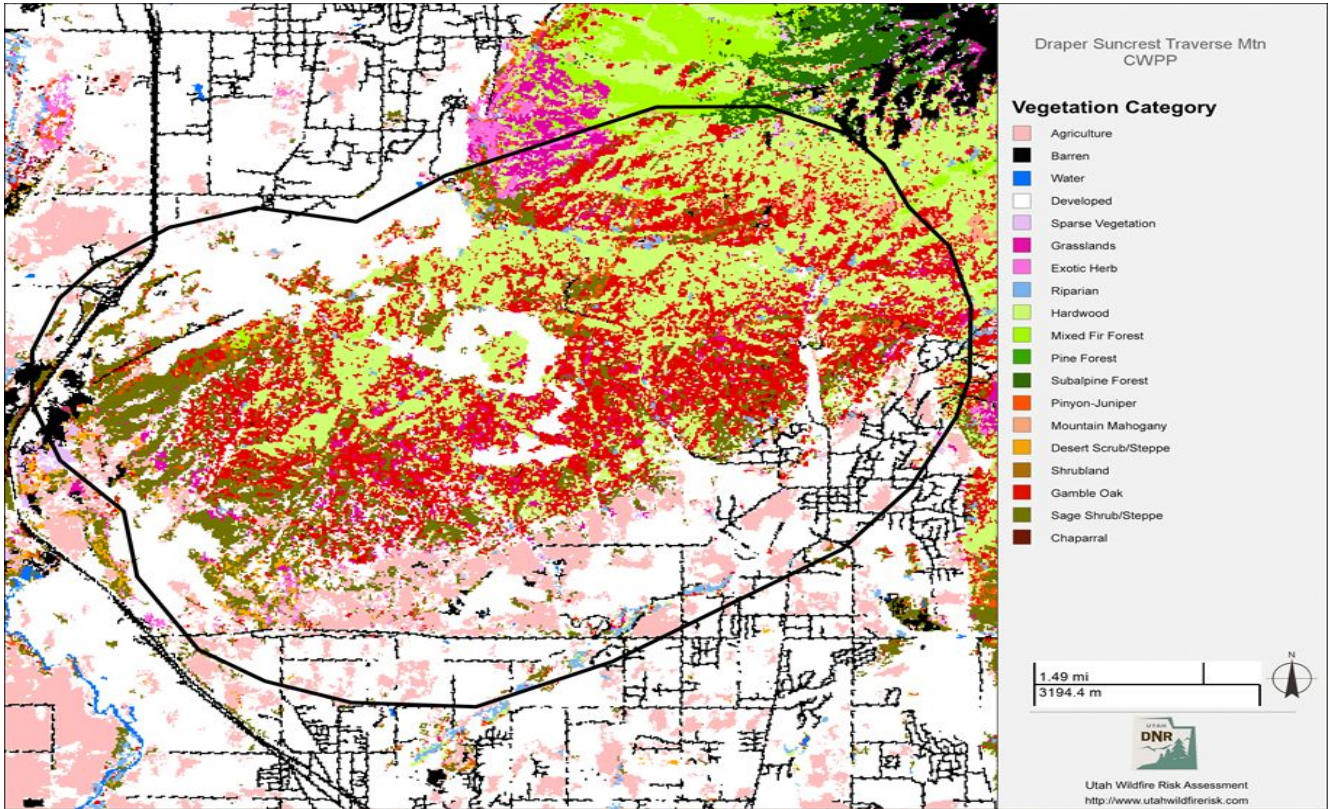
# Suncrest & Traverse Mountain CWPP



# Suncrest & Traverse Mountain CWPP



# Suncrest & Traverse Mountain CWPP



# Suncrest & Traverse Mountain CWPP

## PARTNERSHIPS AND COLLABORATION

The communities of Suncrest and Traverse Mountain straddle Traverse Mountain located on the border of Salt Lake and Utah Counties with Suncrest in SL County and Traverse Mountain in Utah County. Both communities have grown rapidly and vegetation and slopes put the area in an ‘Extreme Risk’ category for wildfire. Fires in the area leave bare ground increasing the dangers of landslides and mudslides post-fire. Both communities sit primarily on privately owned lands but are surrounded by public lands. USFS Wasatch-Cache property and the lone Peak Wilderness abut on the north and east. Planning and implementation are a collaborative effort between community members, Draper FD, Lehi FD, USFS, FFSL and Lone Peak Fire District (Alpine / Cedar Hills).

### PART I COMMUNITY DESCRIPTION

<b>Community Legal Structure</b>			
List the government entities associated with the community – city, town, unincorporated community, special service district, homeowner association(s), other.			
<b>Organization</b>	<b>Contact Person</b>	<b>Phone Number</b>	<b>E-mail</b>
Suncrest HOA	Tod Bean		tbean@ccmcnet.com
Traverse Mountain HOA	Karl Karrin		karlk@traversemountain.com
Draper City Mayor	Troy K Walker		troy.walker@draper.ut.us
Lehi City Mayor	Mark Johnson		
SL County Mayor	Jenny Wilson		

<b>Population – all focus areas</b>	
<b>Approximate number of homes</b>	12,000
<b>Approximate number of lots</b>	12,500
<b>Approximate number of commercial entities</b>	700
<b>Approximate number of full-time residents</b>	47,000
<b>Approximated number of part-time residents</b>	1,000
<i>Notes/comments:</i>	

## Suncrest & Traverse Mountain CWPP

<b>Restricting Covenants, Ordinances, etc. (Attach as appendix) – all focus areas</b>	
For example, home association bylaws may have requirements regarding building construction materials or vegetation removal, or regarding access in a gated community.	
Source	Details
CCR's	"Do Not Disturb"
City / HOA	Landscape plans with flammables next to homes Residential construction guidelines Fireworks prohibited
County	FCOZ

<b>Access – Enter Focus Area 1</b>
<b>Directions to community</b>
South from SLC to Suncrest I-15 Exit 288 then turn left onto Highland Dr., then continue 0.8 miles and turn left on Traverse Ridge Rd North from Provo to Suncrest I-15 Exit 284 then turn east on UT-92 (Timpanogos Hwy), then continue 3.4miles and left onto Highland Dr. and continue on to Suncrest Drive
<b>Seasonal access</b>
Snow tires and other capabilities advised during inclement weather

<b>Roads – Enter Focus Area 1</b>								
	None	Some	All	Adequate	Inadequate	% Pavement	% gravel	% dirt
Road signs present			X					
Will support normal flow of traffic		X						
Are loop roads		X						
Are dead-end roads		X						
Turnaround space available at end of road for emergency equipment		X		X				
<i>Notes/comments:</i>								

<b>Driveways – Enter Focus Area 1</b>						
	Adequate	Inadequate	None	Few	Most	All

## Suncrest & Traverse Mountain CWPP

Most driveways width and height clearance, road grades and vegetation appearance are...		x			x	
Individual homeowners have posted their name and address	x			x		
<i>Notes/comments:</i>						

Structures – Enter Focus Area 1						
	None	Few	Some	Many	Most	All
Wood frame construction						
Have wood decks or porches					x	
Have wood, shake or shingle roofs	x					
Are visible from the main subdivision road					x	
<i>Notes/comments:</i>						

Bridges, Gate, Culverts, other – Enter Focus Area 1			
	None	Some	All
Bridges support emergency equipment			x
Gate provides easy access to emergency equipment			x
Culverts are easily crossed by emergency equipment			x
<i>Notes/comments:</i>			

Utilities – Enter Focus Area 1						
	Below ground	Above ground	Provided by	Phone number	% marked with a flag or other highly visible means	% utilized
Telephone service			Centurylink	801-741-0300		
Electrical service			RMP	888-221-7070		
Are there homes utilizing propane?						
Are there homes utilizing natural gas?						
<i>Notes/comments:</i>						

## Suncrest & Traverse Mountain CWPP

List locations of propane tanks above ground – all focus areas		
Owner	Address, lat/long, etc.	Size
<i>Notes/comments:</i>		

Primary Water Sources – all focus areas			
Approximate % homes using central water system		100	
Approximate % homes using individual wells			
Approximate % homes having additional private water source			
Water provided by	Draper City		801-576-6557
<i>Notes/comments:</i> WaterPro Inc. Irrigation and Culinary Water in Draper (801-571-2232)			

List locations of water sources – all focus areas		
Owner	Address, lat/long, etc.	Accessible
Browns Pond	40.5168364, -111.8836649	Yes
WaterPro Pond	40.5340306, -111.8386392	Yes
Sunset Pond	40.5356797, -111.8693414	Yes
<i>Notes/comments:</i>		

### PART II: RISK ASSESSMENT

*The following information is based on the Communities At Risk (CARs) list that was developed cooperatively at the local and state level to assist land management agencies and other stakeholders in determining the scope of the WUI challenge and to monitor progress in mitigating the hazards in these areas. This information is updated annually through the interagency fuel groups. Input the fields that are reflected on the state list found on our website at [forestry.utah.gov](http://forestry.utah.gov).*



## Suncrest & Traverse Mountain CWPP

### Natural Resources at Risk

Describe the natural resources at risk in the area, such as watershed, forest products, wildlife, recreation tourism, etc.

Wildlife, watershed and recreation. Three large watersheds are affected by these communities; 1- Corner Canyon-Jordan River, 2- Headwaters of Dry Creek and 3- Outlet of Dry Creek-Jordan River. Recreation is year-round and includes; cycling, hang gliding, hiking, skiing and running. Wildlife includes; quail, chukar, pheasant, mule deer, elk fox, coyote, cougar and bears. Some small agricultural parcels at the base of Traverse Mountain.

### Area Fire History

Month/Year of fire	Ignition point	Ignition source	Acres burned

**Fire Occurrence:** Number of fires in the area for the last 10 years \_\_\_\_\_ to \_\_\_\_\_

	<b>0</b>	<b>No Risk</b>	
<b>x</b>	<b>1</b>	<b>Moderate</b>	<b>0 to 1 fire/township</b>
	<b>2</b>	<b>High</b>	<b>2 to 14 fires/township</b>
	<b>3</b>	<b>Extreme</b>	<b>Greater than 14 fires/township</b>
<b>Rating</b>	<b>1</b>		

**Fuel Hazard:** Assess the fuel conditions of the landscape and surrounding the community

	<b>0</b>	<b>No Risk</b>	
	<b>1</b>	<b>Moderate</b>	Moderate to low to control, fire intensities would generally cause moderate damage to resources based on slope, wind speed and fuel. Vegetation Types: Ponderosa pine/mountain shrub, grassland, alpine, dry meadow, desert grassland, Ponderosa pine, Aspen and mountain riparian.
<b>x</b>	<b>2</b>	<b>High</b>	High resistance to control, high to moderate intensity resulting in high to moderate damage to resources depending on slope, rate of spread, wind speed and fuel loading. Vegetation Type: Maple, mountain shrubs, sagebrush, sagebrush/perennial grass, salt desert scrub, Black Brush, Creosote and Greasewood.
	<b>3</b>	<b>Extreme</b>	High resistance to control, extreme intensity level resulting in almost complete combustion of vegetation and possible

## Suncrest & Traverse Mountain CWPP

			damage to soils and seed sources depending on slopes, wind speed, rate of spread and fuel loading.
<b>Rating</b>	<b>2</b>		

<b>Values Protected:</b> Evaluate the human and economic values associated with the community or landscape, such as homes, businesses and community infrastructure.			
	<b>0</b>	<b>No Risk</b>	
	<b>1</b>	<b>Moderate</b>	Secondary Development: This would be seasonal or secondary housing and recreational facilities.
	<b>2</b>	<b>High</b>	Primary Development: This would include primary residential housing, commercial and business areas.
	<b>3</b>	<b>Extreme</b>	Community infrastructure and community support: This would be water systems, utilities, transportation systems, critical care facilities, schools manufacturing and industrial sites. It may also include valuable commercial timber stands, municipal watersheds and areas of high historical, cultural and/or spiritual significance which support and/or are critical to the well-being of the community.
<b>Rating</b>	<b>2</b>		

Fire Occurrence	Fuel Hazard	Values Protected	Fire Protection Capabilities	Overall Rating
1	2	2	2	7
<b>Total: 4-7 Moderate, 8-11 High, 12 Extreme</b>				Moderate

<b>Insurance Rating</b>	
Provide the current insurance rating for the community	
ISO Fire Insurance Rating:	

<b>Protection Capabilities:</b> Insurance Services Organization (ISO) rating for the community will serve as an overall indicator of the protection capabilities.			
<b>x</b>	<b>1</b>	<b>Moderate</b>	<b>ISO Rating of 6 or lower</b>
	<b>2</b>	<b>High</b>	<b>ISO Rating 7 to 9</b>
	<b>3</b>	<b>Extreme</b>	<b>ISO Rating 10</b>
<b>Rating</b>			

The following information is based on the Utah Wildfire Risk Assessment Portal (UWRAP) and Area of Interest (AOI) Summary Reporting Tool. Reports are generated using a set of predefined map products developed by the West Wide Wildfire Risk Assessment (2012) project. The UWRAP provides a consistent, comparable set of scientific results to be used as a foundation for wildfire

## Suncrest & Traverse Mountain CWPP

mitigation and prevention planning in Utah.

**Wildland Development Area (WUI) Impacts:** Data set is derived using a Response Function modeling approach. To calculate the Wildland Development Area Impact Response Function Score, the Wildland Development Area housing density data was combined with flame length data and Response Functions assignments to represent potential impacts.

**Wildfire Threat:** A number that is closely related to the likelihood of an acre burning.

**Wildfire Risk:** Combines the likelihood of a fire occurring (Threat), with those of areas of most concern that are adversely impacted by fire (Fire Effects). Wildfire Threat Index is derived from historical fire occurrence, landscape characteristics including surface fuels and canopy fuels, percentile weather derived from historical weather observations and terrain conditions. Fire Effects are compiled of Value Impacts and Suppression Difficulty factors.

	Total Acres AOI for each Category with the percentages added		
	Wildfire Risk	WUI Impacts	Wildfire Threat
Low (1-4)			17,082 / 38.3%
Moderate (5-7)			22,895 / 51.2%
High (8-10)			4.65310 / 4%

Including maps from the UWRAP report may also be beneficial in this section. Consider using the following as an example.

- Location Specific Ignitions
- Ignition and Fire occurrence density
- Water Impacts
- Rate of Spread
- Suppression Difficulty
- Fire Effects
- Slope and aspect

**Prevention:** Activities directed at reducing the occurrence of fires, including public education, law enforcement, and personal contact.

**Preparedness:** Activities that lead to a state of response readiness to contain the effects of wildfire to minimize loss of life, injury, and damage to property. Including access to home/community, combustibility of homes/structures and creating survivable space.

**Mitigation:** Actions that are implemented to reduce or eliminate risks to persons, property or natural resources including fuel treatments and reduction.

## Suncrest & Traverse Mountain CWPP

**Maintenance:** The process of preserving actions that have occurred including fuel treatments and reduction.

<b>Past Accomplishments</b>	
<b>Prevention</b>	<ul style="list-style-type: none"> <li>● Recognized as Firewise Community (2017)</li> <li>● Formed an active CWPP committee that meets regularly (2017)</li> </ul>
<b>Preparedness</b>	<ul style="list-style-type: none"> <li>● Revised and updated CWPP (2018)</li> <li>● Wildland firefighting trainings including S-130, S-190 and chainsaw training</li> <li>● Purchased a Type 3 brush truck (2018)</li> <li>● Developed and evacuation plan (2018)</li> </ul>
<b>Mitigation</b>	<ul style="list-style-type: none"> <li>● Draper City created and maintained over 90 miles of trails that act as fuel breaks and EMS vehicle access points</li> <li>● Suncrest contributed over 244 in-kind hours to Firewise landscaping efforts</li> <li>● Bi-annual community chipper day participation with ~75 participating properties</li> <li>● Draper City has evaluated over 70% of the lots for compliance with the vegetation code</li> </ul>
<b>Maintenance</b>	<ul style="list-style-type: none"> <li>● Continued home assessments in Suncrest by Draper FD</li> <li>● Ongoing education about prevention, preparedness and mitigation relating to wildfire</li> <li>● Annual clean up day in Suncrest and Traverse Mountain Communities</li> <li>● Annually revisit CWPP goals with County Fire Warden / FFSL</li> </ul>

### PART III: RISK REDUCTION GOALS/ ACTIONS

**Goals of Plan:** Provide a brief statement under the Prevention, Preparedness, Mitigation and Maintenance goals. These should align with the pillars of the National Cohesive Strategy and the Utah Catastrophic Wildfire Reduction Strategy (1. Resilient Landscapes 2. Fire Adapted Communities 3. Wildfire Response).

**Identification of Actions:** Provide detailed project information. These projects/actions can be mapped/tracked in the Utah WRA portal and should be consistent with a Cooperative Agreement in compliance with the Wildfire Policy if applicable.

**GOAL A: PREVENTION** – Activities directed at reducing the occurrence of fires, including public education, law enforcement, and personal contact.

<b>A.1 - Prevention</b>			
<b>Actions:</b>	<b>Timeline:</b>	<b>Community Lead:</b>	<b>Priority:</b>
Ready, Set, Go! information outreach	2021-2022	FD	Medium
Defensible space information outreach	2021-2022	FD / Warden	High

## Suncrest & Traverse Mountain CWPP

<i>Notes, updates and monitoring</i>		

**GOAL B: PREPAREDNESS** – Activities that lead to a state of response readiness to contain the effects of wildfire to minimize loss of life, injury, and damage to property. Including access to home/community, combustibility of homes/structures and creating survivable space.

<b>Goal B.1 – Evaluate, upgrade and maintain community wildfire preparation</b>			
Action(s):	Timeline:	Community Lead:	Priority:
Develop 2020 CWPP (5-year shelf life)	2020	FD / FFSL	High
Lot assessments	2020-2021	FD / UFA / FFSL	Medium
Wildland fire equipment acquisition	2020-2021	FD	High
Identify and prepare community safety zones	Ongoing	FD / Communities	Medium
Best utilization of social media to deliver EMS notices and alerts	Ongoing	FD / Communities	Medium
<i>Notes, updates and monitoring</i>			

<b>Goal B.2 – Educate community members to prepare for and respond to wildfire.</b>			
Action(s):	Timeline:	Community Lead:	Priority:
Firewise community development	2020-2021	FD / Liaison / FFSL	Low
Community education events, fairs, chipper days as the pandemic allows	2020-2021	FD / Liaisons / UFA / FFSL	Medium
<i>Notes, updates and monitoring</i>			

<b>Goal B.3 – Address identified regulatory issues impacting community wildfire prevention and response needs.</b>			
Action(s):	Timeline:	Community Lead:	Priority:
Update restrictions, covenants and ordinances affecting wildfire response and mitigation in this plan. Include City, County, FCOZ and HOA etc	2021-2022	FD / UFA / HOA's	High

## Suncrest & Traverse Mountain CWPP

*Notes, updates and monitoring*

### Goal B.4 – Evaluate response facilities and equipment.

Action(s):	Timeline:	Community Lead:	Priority:
Wildland fire equipment annual inspections	2020-2021	SL County Fire Warden	High

*Notes, updates and monitoring*

**GOAL C: MITIGATION** – Actions that are implemented to reduce or eliminate risks to persons, property or natural resources including fuel treatments and reduction.

### Goal C.1 – Decrease fuels within the community to reduce wildfire impact in and around the community.

Action(s):	Timeline:	Community Lead:	Priority:
Identify target areas for prioritized fuel mitigation efforts	2020-2021	FD / UFA / FFSL / Liaisons	High
Seed adjacent lands to change fuel type and reduce fire impacts	Ongoing	FD / FFSL / Draper City	Low

*Notes, updates and monitoring*

### Goal C.2 – Work with local, state and federal fire officials to decrease fuels on private and adjacent public lands to reduce wildfire intensity and impact in and around the community.

Action(s):	Timeline:	Community Lead:	Priority:
Identify ways to leverage funding and resources	2021-2022	FD / UFA / FFSL	High
Work with surrounding cities and land managers for cross-boundary mitigation projects	2021-2022	FD / UFA / FFSL / USFS / SL County	High
Assista and participate in community chipping	Annually	FD	High

*Notes, updates and monitoring:*

**GOAL D: MAINTENANCE** – The process of preserving actions that have occurred including fuel treatments and reduction.

## Suncrest & Traverse Mountain CWPP

Goal D.1 - Regularly evaluate, update and maintain project commitments.			
Action(s):	Timeline:	Community Lead:	Priority:
Community clean up day	Annually	HOA residents	High
Lot assessments	Ongoing	Draper FD	High
Chipper day(s)	Annually	Draper FD / FFSL	Medium
Annually update CWPP goals and priorities with maps	2021	Dax Reid / SL County Fire Warden / UFA	High
Review and evaluate past projects for successes, lessons learned and re-treatments	2021-2022	FD / UFA / FFSL / Liaisons	Medium
Establish new and maintain existing fire breaks	Ongoing	Draper FD / Lone Peak Fire District / Lehi / FFSL	High
Track in-kind participation by communities members	Ongoing	Draper FD	High
<i>Notes, updates and monitoring:</i>			

### PART IV: CONTACTS

The contacts in this part identify community resources that can be used to complete the goals of the plan.

Planning Committee Member List			
Name	Affiliation	Phone Number	E-mail
Dax Reid	WUI Coordinator		daxreid@utah.gov
Robert Sanders	County Fire Warden		rsanders@utah.gov
Cody Jolley	Draper City Fire		cody.jolley@draper.ut.us>
JoAnn Adiego	Suncrest		hillranch48@gmail.com
Ken Apgood	Suncrest		kenapgood@comcast.net
Joe Orlet	Suncrest		joeorlet@gmail.com
Brooke LauLu	Suncrest		blaulu@ccmcnet.com
Lisa Holcomb	Suncrest		lisaholcomb@hotmail.com
Rodney Smith	Suncrest / Traverse Mtn		rodneys@doittech.com
Maria Felt	Suncrest		woodyoctober@gmail.com

## Suncrest & Traverse Mountain CWPP

Formal Associations			
Organization	Contact Person	Phone Number	E-mail
Suncrest HOA	Tod Bean		tbean@ccmcnet.com
Traverse Mtn HOA	Karl Karrin		karlk@traversemountain.com
Suncrest / Eagle Crest LDS Church			
Traverse Mtn LDS Stake			
HAM Radio Group			
Local Boy Scout Troops	David Garetins		davejg@live.com
CERT	Michelle Casello		
SMCC Church			

Media Support		
Organization	Email	Phone
News Entity and Contact	Email Address	Phone Number
Channel 2 (KUTV) News Desk	newsdesk@kutv2.com	801-839-1333
Channel 4 (ABC) John Gleason	News@abc4.com	
Channel 5 (KSL) Sam Penrod	sam.penrod@ksl.com	801-575-5592
Channel 13 (FOX) Renai Bodley	News@fox13news.com	801-536-1306
KBYU Television		800-298-5298
Daily Herald	Stittrington@heraldextra.com	801-344-2570
Daily Herald Kurt Hanson, Reporter	khanson@heraldextra.com	801-344-2560
Daily Herald Janice Peterson, Online Editor	jpeterson@heraldextra.com	801-344-2530
Daily Herald Stacy Johnson, Online Editor	Sjohnson@heraldextra.com	801-344-2543
Daily Herald David Kennard, Executive Editor	Dkennard@heraldextra.com	801-602-6612
Deseret News Sara Israelsen-Hartley	Sisraelsen@desnews.com	801-437-7627
Salt Lake Tribune Stephen Hunt	all.justice@sltrib.com	801-257-8787



## Suncrest & Traverse Mountain CWPP

Metro News Tom Jordan	Tom_jordan@metronetworks.com	801-281-6754
-----------------------	------------------------------	--------------

Transportation			
Organization	Contact Person	Phone Number	E-mail
Utah Transit Authority		801-743-3882	
UTA Police	Police Dispatch	801-287-3937	
UDOT	Jason Davis	801-943-9448	jasondavis@utah.gov
SL County Public Works	Kevyn Smelzer		pwops-online@slco.org
Utah County Public Works	Ken Bringhurst		kenbringhurst@utahcounty.gov
Alpine School District	Vern Henshaw		vhenshaw@alpinedistrict.org
Canyon School District	Gindere Rhode		grhode@canyondistrict.org

### APPENDIX

<b>Appendix A:</b>	
--------------------	--

<b>Appendix B:</b>	
--------------------	--

<b>Appendix C:</b>	
--------------------	--

<b>Appendix D:</b>	
--------------------	--