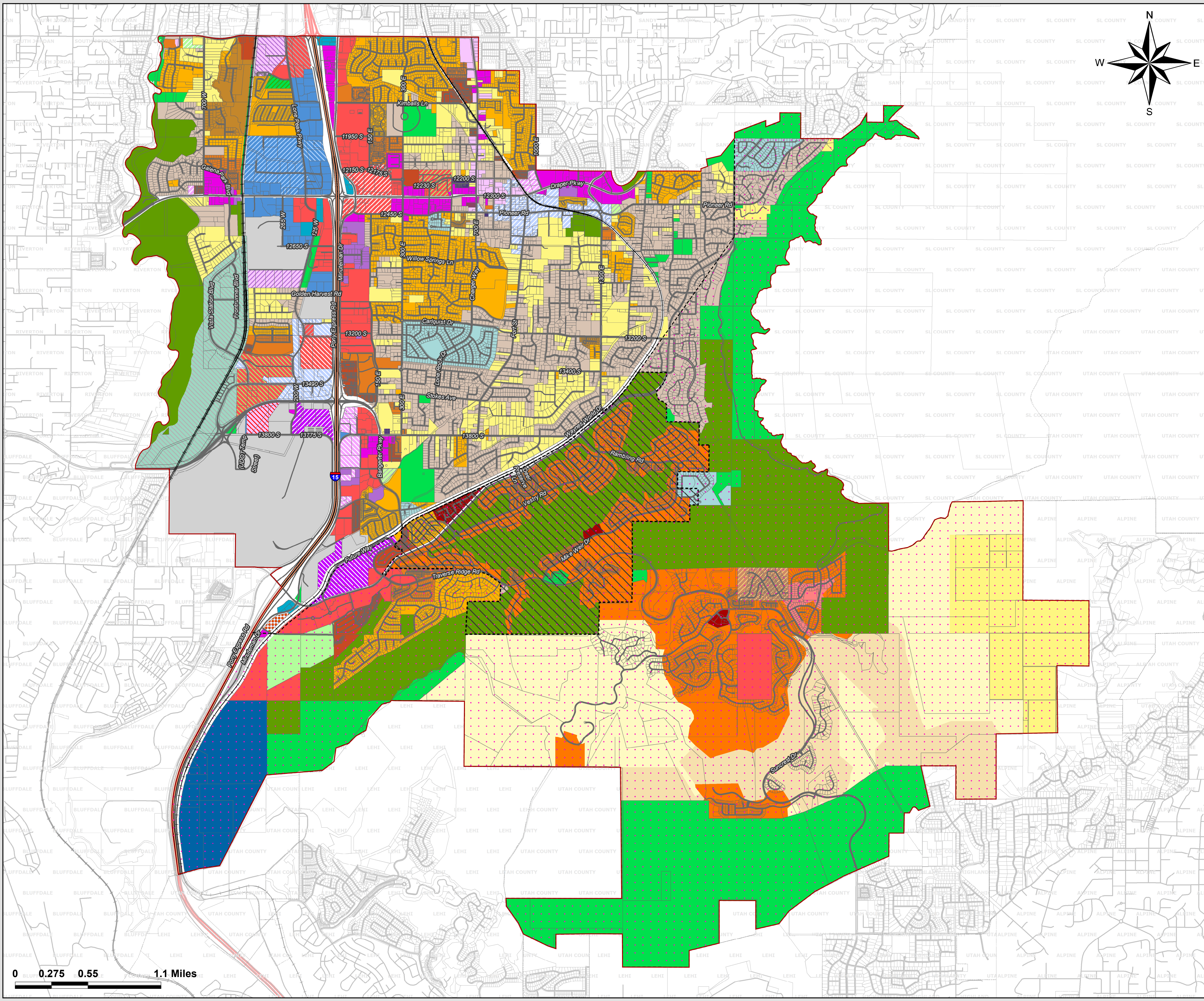
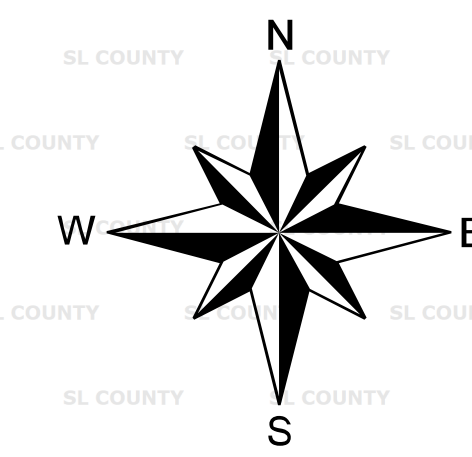




OFFICIAL ZONE DISTRICT MAP OF DRAPER CITY

ADOPTED SEPTEMBER 30, 2001

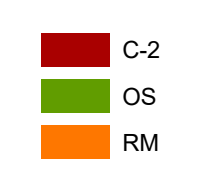
THIS MAP SUPERSEDES ALL OTHER ZONE DISTRICT MAPS



Legend		
C-3	PI	CSD-11400 LPP
C-2	PF	CSD-136C
CR	M1	CSD-DD
CC	M2	CSD-DP
OR	A2	CSD-DPMU
CO1	A5	CSD-DRC
CO2	OS	CSD-HIGHLINE
CG	RH	CSD-IOP
CN	RA1	CSD-KMAC
CS	RA2	CSD-LP
CI	R3	CSD-LPA
CBP	R4	CSD-SWF
CBU	RM	CSD-WMBD
DC	RM1	MARF
TC	RM2	MPC- Edelweiss
TSD	RR-22	RSD-1- Foxgate Farms
IC	RR-43	RSD-2- Corner Canyon Vista
		RSD-3- South Fork Estates
		RSD-4- Valle di Villa
		RSD-5- Bellevue
		Hillside Sensitive Overlay
		South Mountain Agreement

DEVELOPMENT AGREEMENT FOR SOUTH MOUNTAIN PLANNED UNIT AREA

NOTE:
This area is not subject to the zone designations on this map. The appropriate zone designations are the following:
(Refer to the Zoning Ordinance for zone descriptions).



RESIDENTIAL SPECIAL DISTRICT

NOTE:
These areas are subject to the zone designations given at time of approval. For the appropriate zone designations refer to the following:
(Zoning Ordinance Sec. 9-17) for development standards.

- 1) FOX GATE FARMS -010
- 2) CORNER CANYON VISTA -020
- 3) SOUTH FORK ESTATES -030
- 4) VALLE DI VILLA -040
- 5) BELLEVUE -050

PROPERTY LINES WERE OBTAINED FROM GIS INFORMATION THROUGH SALT LAKE & UTAH COUNTIES. DRAPER CITY HAS MADE A REASONABLE EFFORT TO PROVIDE CORRECT INFORMATION, BUT MAKES NO REPRESENTATION AS TO THE COMPLETENESS OR ACCURACY.

**LAST AMENDED ON
JANUARY 18, 2022**

