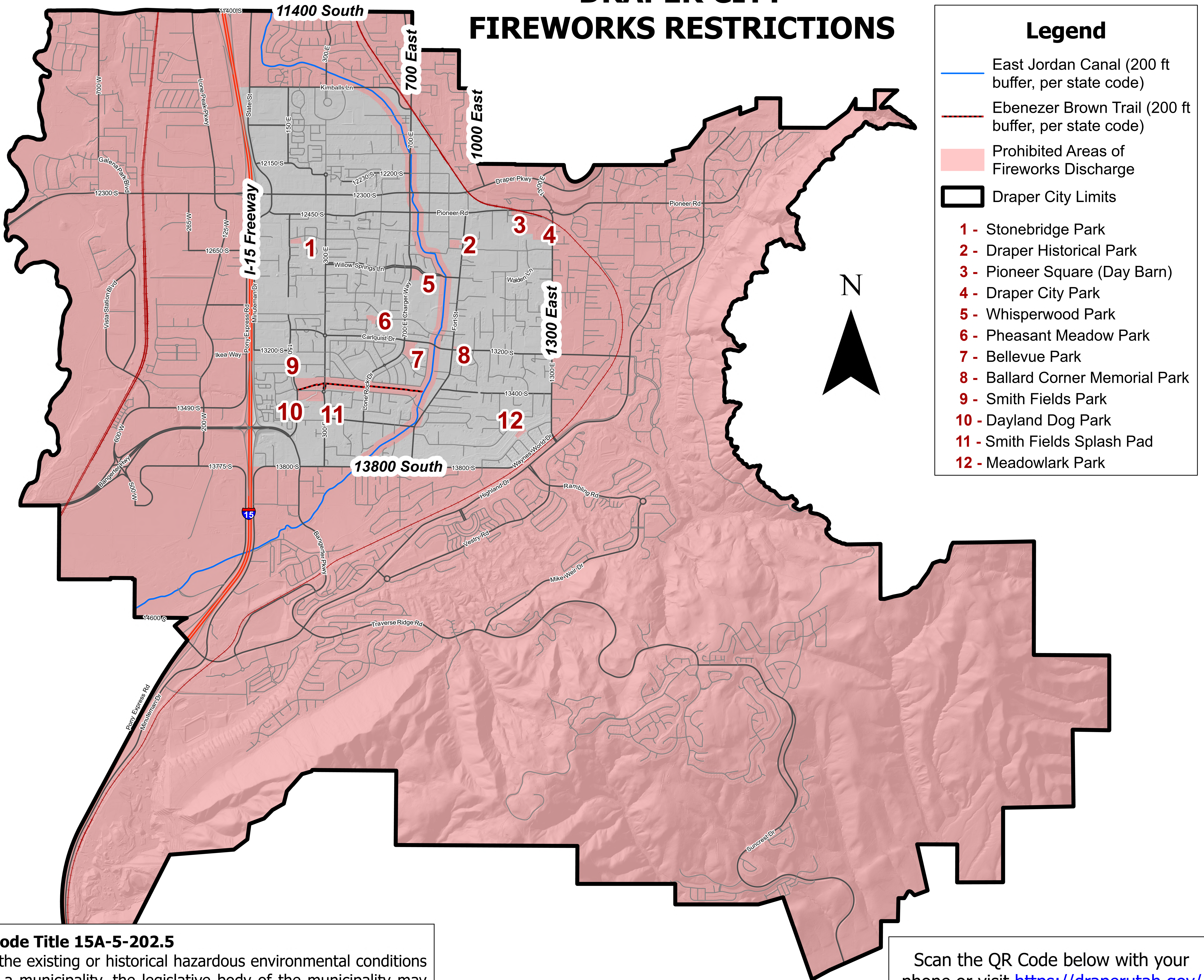
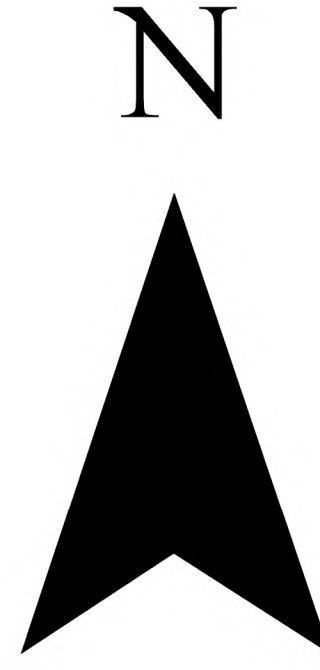


DRAPER CITY FIREWORKS RESTRICTIONS



- Legend**
- East Jordan Canal (200 ft buffer, per state code)
 - Ebenezer Brown Trail (200 ft buffer, per state code)
 - Prohibited Areas of Fireworks Discharge
 - Draper City Limits
- 1 - Stonebridge Park
 - 2 - Draper Historical Park
 - 3 - Pioneer Square (Day Barn)
 - 4 - Draper City Park
 - 5 - Whisperwood Park
 - 6 - Pheasant Meadow Park
 - 7 - Bellevue Park
 - 8 - Ballard Corner Memorial Park
 - 9 - Smith Fields Park
 - 10 - Dayland Dog Park
 - 11 - Smith Fields Splash Pad
 - 12 - Meadowlark Park



Utah Code Title 15A-5-202.5
1.1. If the existing or historical hazardous environmental conditions exist in a municipality, the legislative body of the municipality may prohibit the ignition or use of an ignition source in:
1.1.1. mountainous, brush-covered, forest-covered, or dry grass-covered areas;
1.1.2. within 200 feet of waterways, trails, canyons, washes, ravines, or similar areas;
1.1.3. the wildland urban interface area, which means the line, area, or zone where structures or other human development meet or intermingle with undeveloped wildland or land being used for an agricultural purpose; or
1.1.4. a limited area outside the hazardous areas described in this paragraph 1.1 to facilitate a readily identifiable closed area, in accordance with paragraph 2.

Scan the QR Code below with your phone or visit <https://draperutah.gov/fireworksmap> to view the interactive map.

